

An aerial, high-angle photograph of a bustling city intersection at night, likely in Tokyo. The scene is dominated by tall buildings with glowing windows and large, brightly lit billboards. The streets are filled with cars, their headlights and taillights creating streaks of light. Pedestrians are visible on the sidewalks and crossing the streets. The overall atmosphere is one of vibrant urban energy and modern technology.

TOKYO

*Innovation is
Everywhere*

TOKYO

A city where innovation dwells in everything

With originality and ingenuity, innovative service products are born

Tokyo is ranked as “the world’s No.1 economic city in terms of GDP, valued at 728.8 billion USD”. With a cpopulation of 14.1 million within the Tokyo, Tokyo is both a mature megacity and a constantly-evolving business city where many different business industries gather. A wide variety of innovations are born across the industries, and brand-new service products that defy common sense are invented every day through professional spirit and ambition. A renowned history of craftsmanship and relentless research and development efforts has made Tokyo what it is today. The power to create new value is what supports the society and economy in Tokyo. Tokyo is a place where new ideas are born and made into reality through innovative power.

Innovation is Everywhere



Tokyo is one of the biggest cities in the world with a high number of world-class companies and universities.

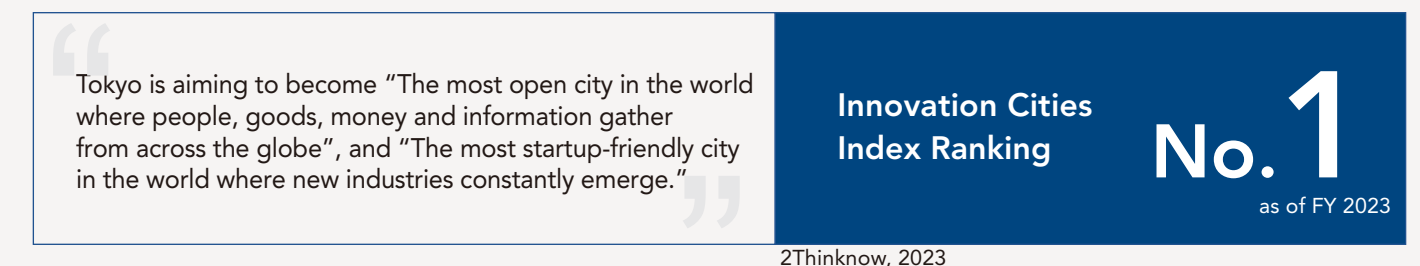
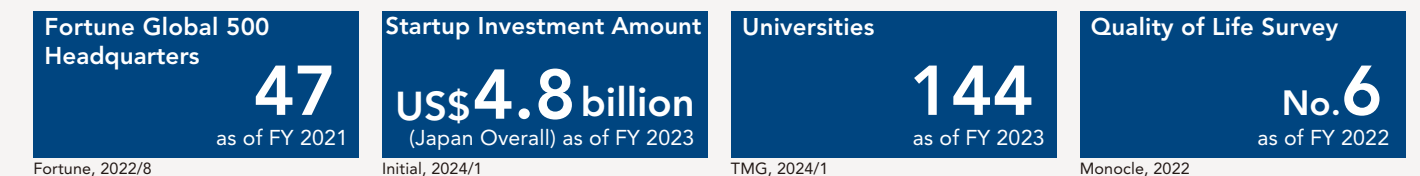
Why Tokyo?

Tokyo, a city that leads businesses to success

Tokyo is the No.1 economic city in the world ranked by GDP. The population of Tokyo measures at around 14.1 million, creating a large market for businesses.

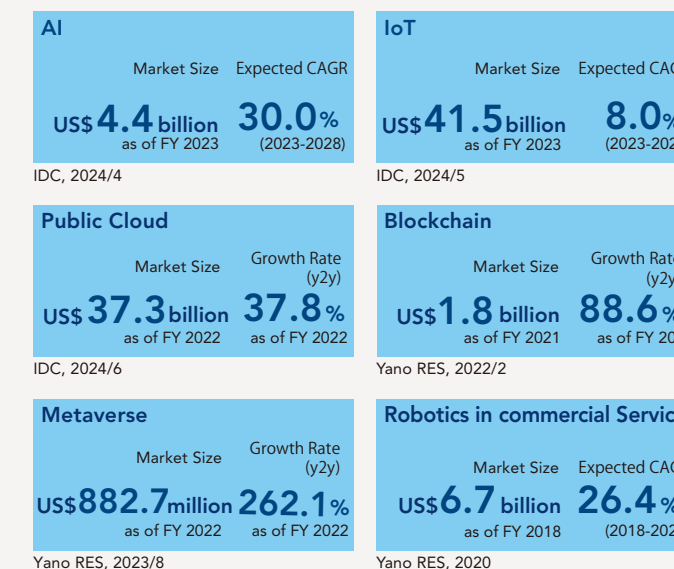


In addition to the concentration of global businesses and startup investments, the large number of universities and the high standard of living make Tokyo an attractive city for doing business.

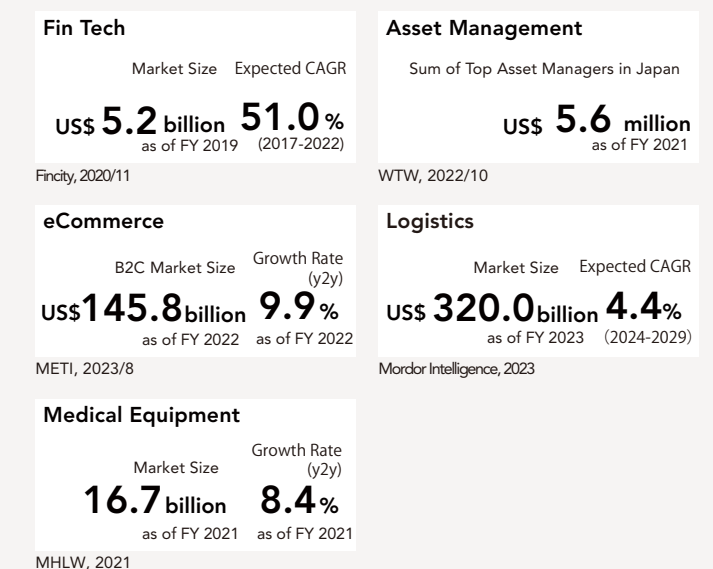


A city that promotes the fourth industrial revolution (Japan Overall)

Based on Technology

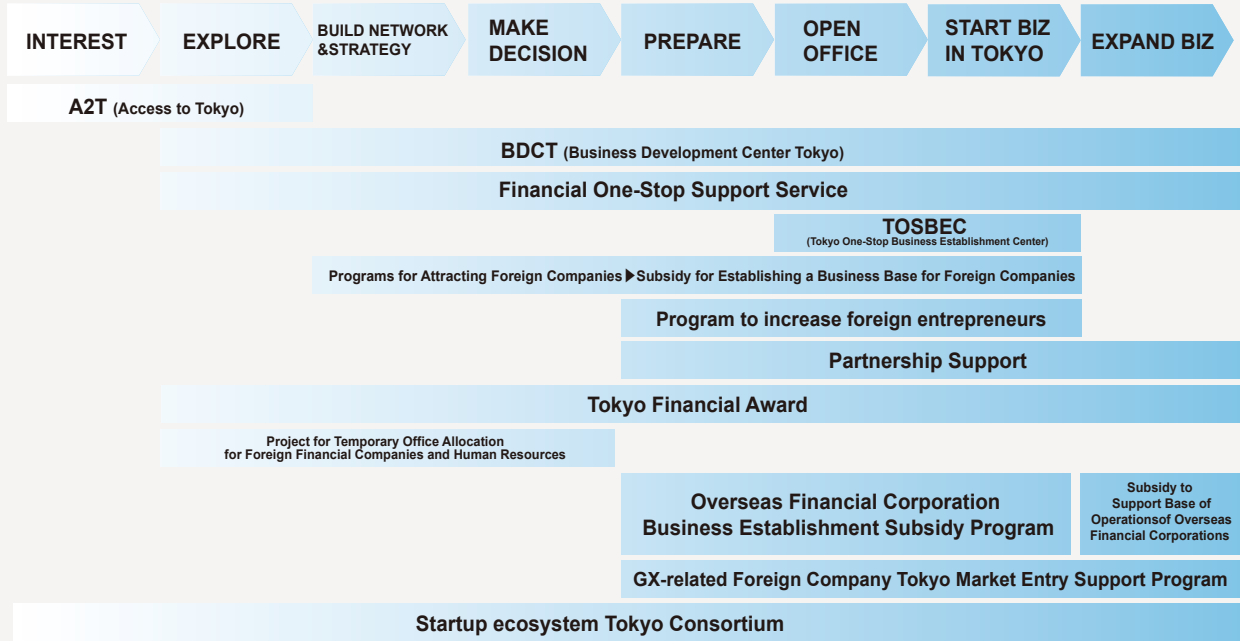


Based on Industry



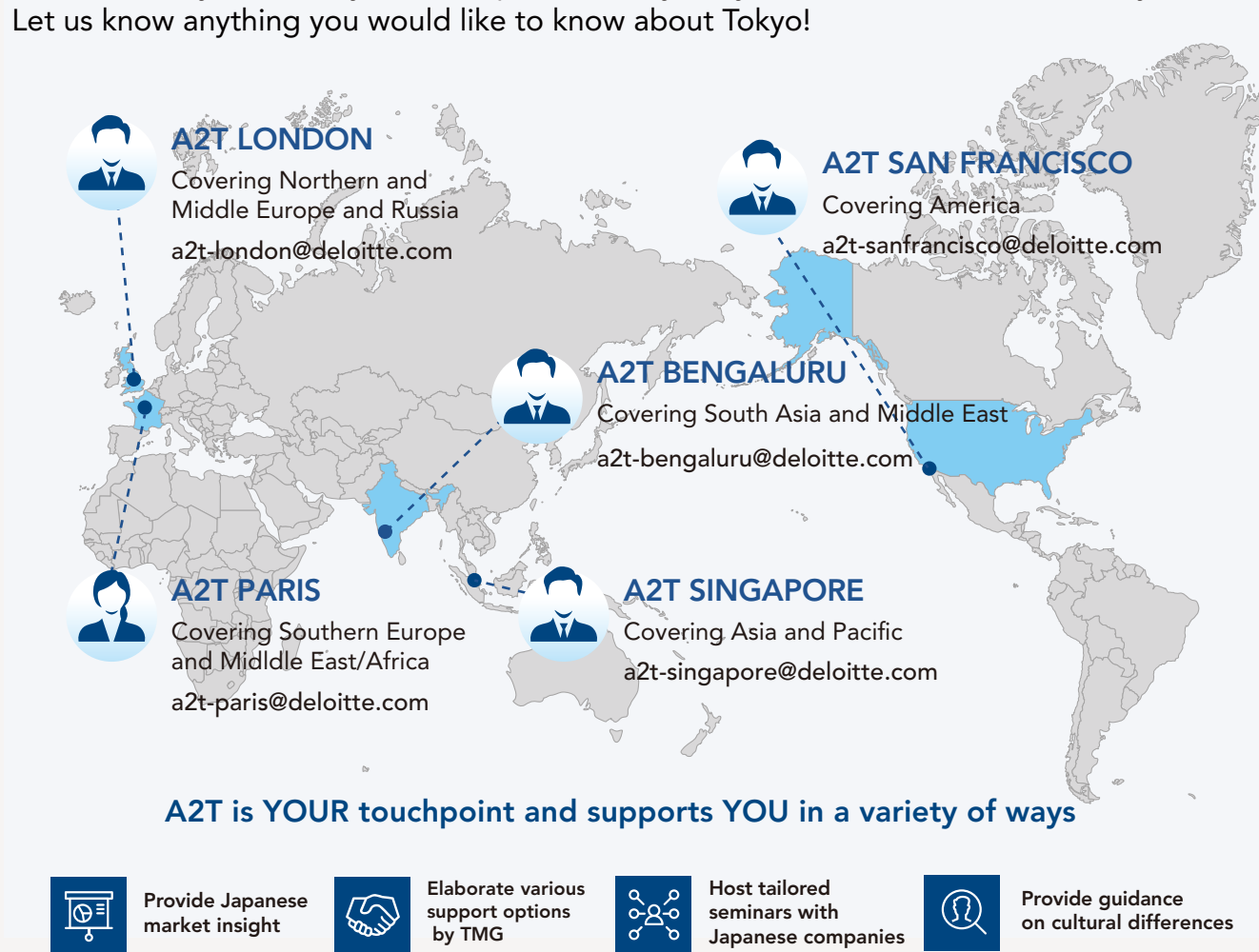
Our Support Services

The Tokyo Metropolitan Government (TMG) offers a variety of free support services to companies that are considering expanding their business to Tokyo. The services range from introducing Tokyo to connecting supported companies with Japanese market leaders.



Access to Tokyo - A2T

Access to Tokyo (A2T) is your touchpoint to Tokyo in your local business community. Let us know anything you would like to know about Tokyo!



Business Devevelopment Center Tokyo - BDCT

BDCT in Tokyo and Hong Kong provides comprehensive services through the Tokyo Metropolitan Government for foreign companies who are considering establishing or expanding their business in Tokyo.

Services provided by each location

Hong Kong	Tokyo		
	Marunouchi	Akasaka	Yurakucho
Business Support			
<input checked="" type="checkbox"/> Business matching <input checked="" type="checkbox"/> Office search <input checked="" type="checkbox"/> Human resources recruitment <input checked="" type="checkbox"/> Expert introduction <input checked="" type="checkbox"/> Guidance and application support for administrative procedures			
Living Support			
<input checked="" type="checkbox"/> Information about- Hospitals, schools and daycare facilities, residence, etc.			
Financial One-stop Support Service		Support for Foreign Entrepreneurs	
<input checked="" type="checkbox"/> Japan's financial rules, regulations and required procedures		<input checked="" type="checkbox"/> Support for "Business manager" Visa	
<input checked="" type="checkbox"/> Financial experts		<input checked="" type="checkbox"/> Funding Support	
<input checked="" type="checkbox"/> Support to apply for the subsidy program for financial companies			

Tokyo One-Stop Business Establishment Center - TOSBEC

TOSBEC provides foreign companies and startups with one-stop services for the steps they need to take to establish a business in Japan, from staff and experts versed in administrative procedures.

<input checked="" type="checkbox"/> Articles of incorporation certification	<input checked="" type="checkbox"/> Immigration
<input checked="" type="checkbox"/> Company registration	<input checked="" type="checkbox"/> Employment insurance
<input checked="" type="checkbox"/> Taxation (national and metropolitan taxes)	<input checked="" type="checkbox"/> Labor insurance
<input checked="" type="checkbox"/> Health insurance and employee pension insurance	etc...

Free Consulting Service

Our Free consulting services provide you with tailored services, based on your company's needs and requests, which accelerate your deviation making of business expansion into Japan and Asia.

Major supports are:	
<input checked="" type="checkbox"/> Entry Starategy Planning for Business Expansion into Tokyo	
<input checked="" type="checkbox"/> Business Partner Identification	
<input checked="" type="checkbox"/> Recruiting Support	
<input checked="" type="checkbox"/> Office Search Support	etc...

Partnership Support

We introduce the business overview and business matching needs of foreign companies to Tokyo-based companies and support organizations in Tokyo, and facilitate matching.

GX-related Foreign Company Tokyo Market Entry Support Program

This market entry program will provide Green Transformation ("GX") related foreign companies* with both subsidies and localization support in order to establish a Japanese entity within the Special Zone for Asian Headquarters in Tokyo.

* A corporation established under foreign laws possessing high levels of technical capability in GX-related fields.



FOLLOW US FOR MORE

KEEP UPDATED ON THE LATEST
BUSINESS & TECH TRENDS IN TOKYO

[https://www.investtokyo
.metro.tokyo.lg.jp/en/](https://www.investtokyo.metro.tokyo.lg.jp/en/)



Contact us!

London

a2t-london@deloitte.com

Paris

a2t-paris@deloitte.com

San Fransisco

a2t-sanfrancisco@deloitte.com

Singapore

a2t-singapore@deloitte.com

Bengluru

a2t-bengaluru@deloitte.com

<https://www.investtokyo.metro.tokyo.lg.jp/en/>



TOKYO
METROPOLITAN
GOVERNMENT